

This presentation is from the 2008 Integrated EA Conference

The 2009 event will be held Feb 24-25

see www.integrated-ea.com



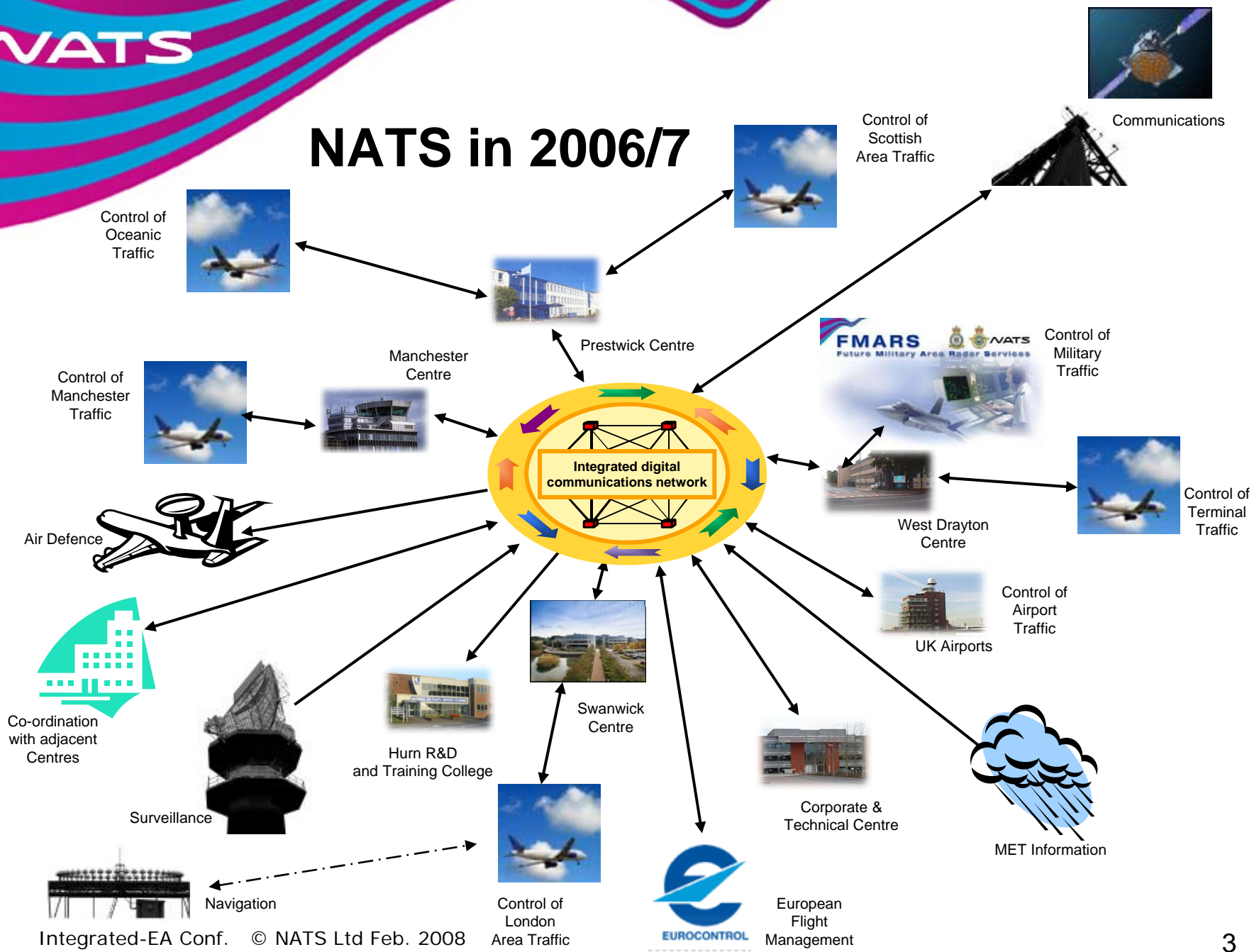
NATS

Technology Strategy Group

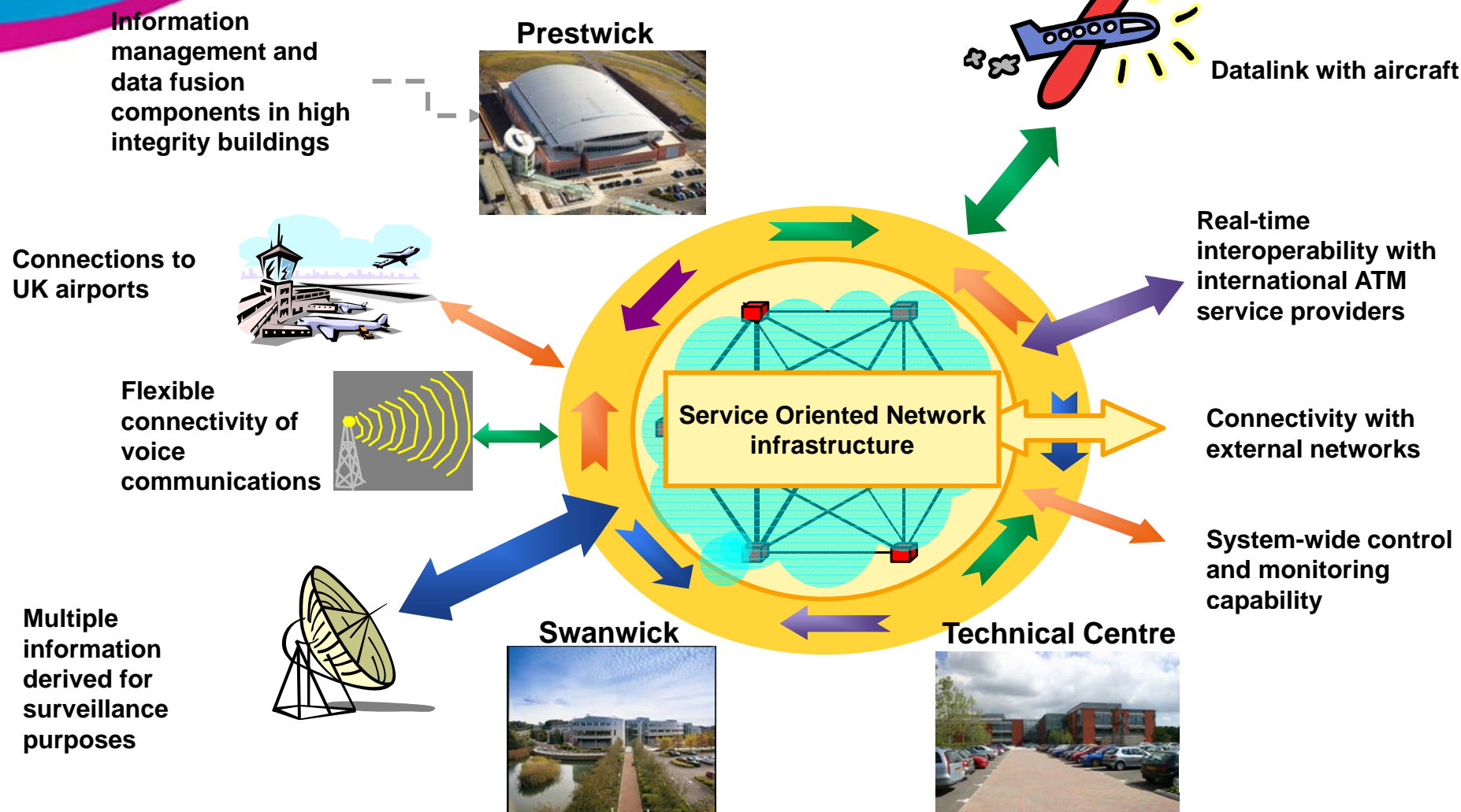
MODAF

A Practical Application of an
Architecture Framework

Steve Winter, Chief Technologist
Peter Hotham, Chief System Architect



NATS in the Future





Some of NATS' Challenges



Traffic growth.

- C. 50% over the next 7 years, enhanced safety.
- Increasingly technology dependent.
- Maintaining system capacity & performance.



Compliance with Regulation & Legislation.

- Enhanced interoperability.
- Maintain licence obligations.
- Minimise environmental impact from Aviation.



Radical transformation of European ATM.

- European Collaboration setting the vision for Air Traffic Management.
- Seamless operation at lower costs across Europe.



A Roadmap?



Operational and Business Drivers.

- Captures the drivers and lays out the strategic evolution development of NATS Systems.
- Aligns the operational needs with the technology solutions (Coherence).



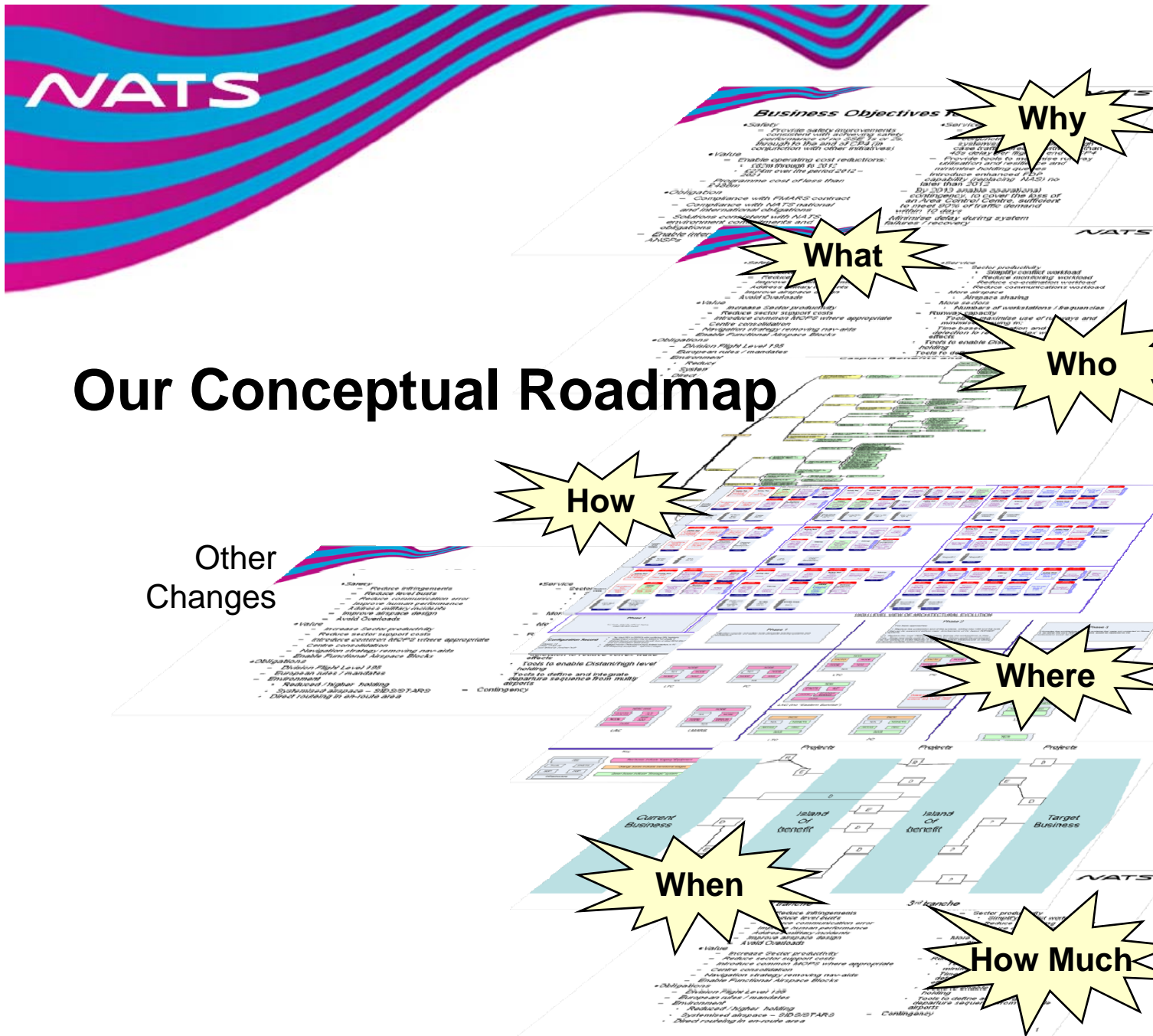
Communication of the Strategy.

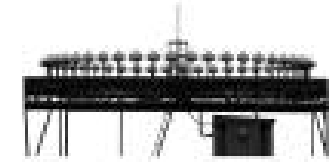
- Facilitates communication to all Stakeholders.
- Positive tracking of Benefit delivery.



Assurance provided.

- Explores 'What-if' scenarios and options.
- Deliverability of the strategy is assessed.





Making our Roadmap 'Reality'



This must have been done before?

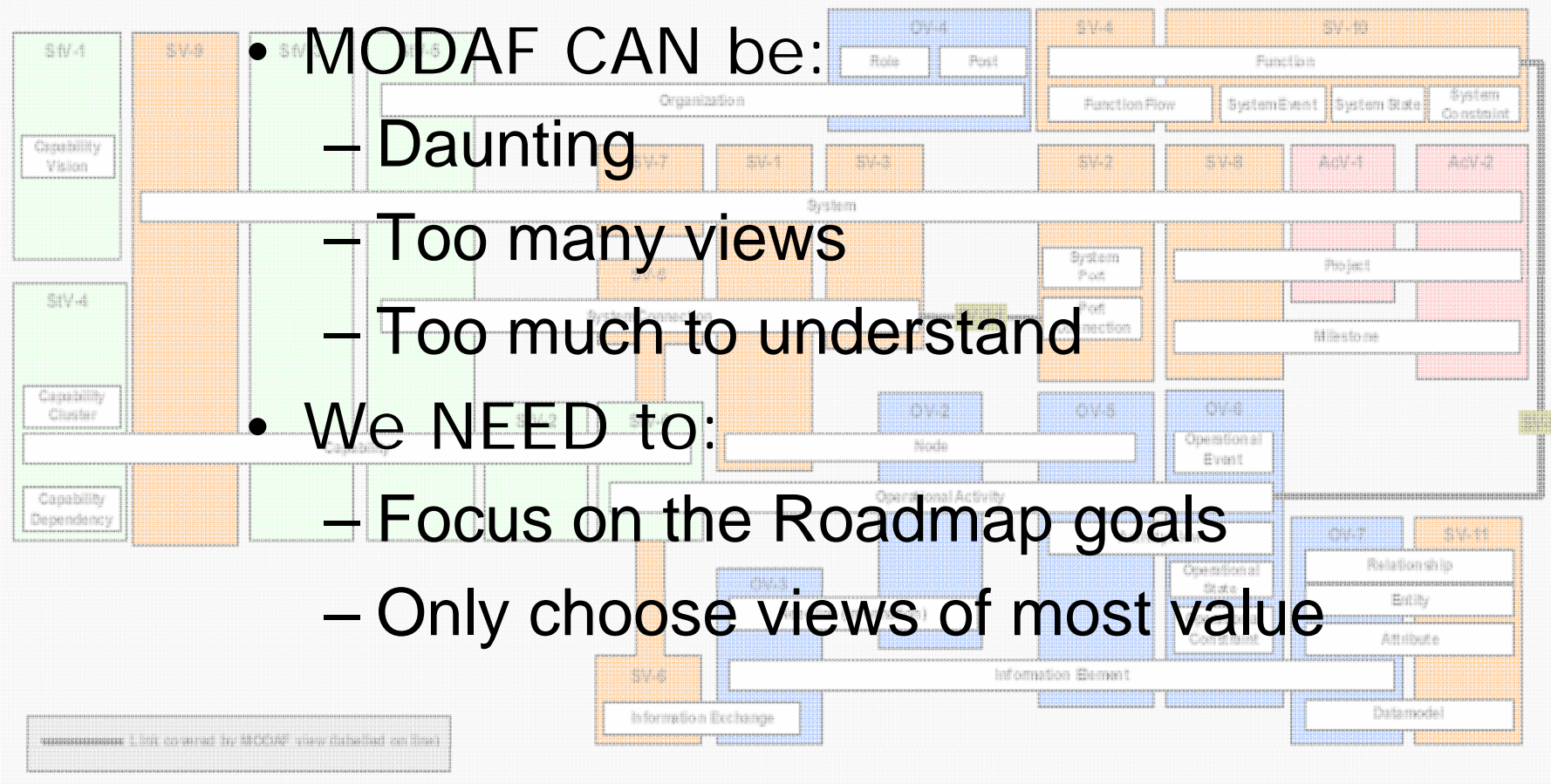
- Must not re-invent.
- Look to industry best-practice ...



An Architecture Framework?

- Examples include Zachman, TOGAF, DODAF, MODAF, RUP, etc.
- ATM no different to any other large complex system of systems, e.g. military.
- MODAF contains many of the views we needed.

- MODAF CAN be:
 - Daunting
 - Too many views
 - Too much to understand
- We NEED to:
 - Focus on the Roadmap goals
 - Only choose views of most value





NATS Application of MODAF (to date)



MODAF Views.

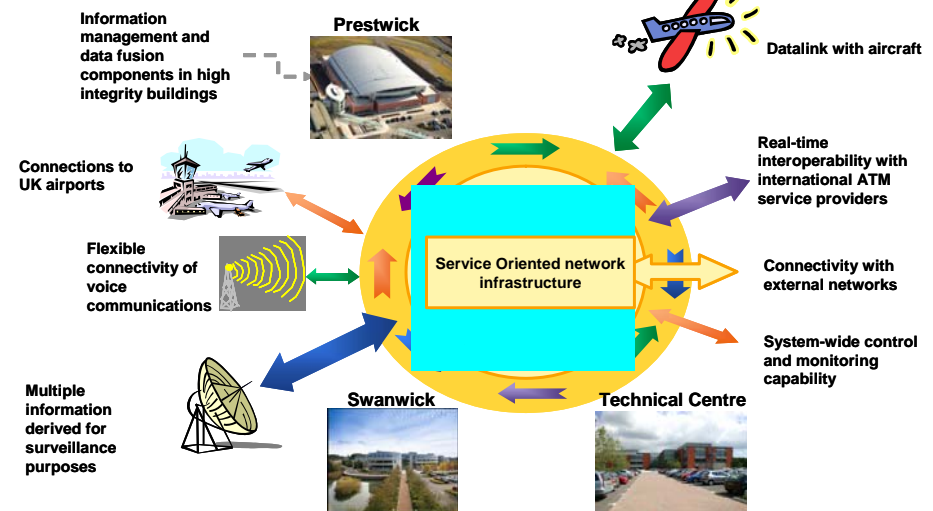
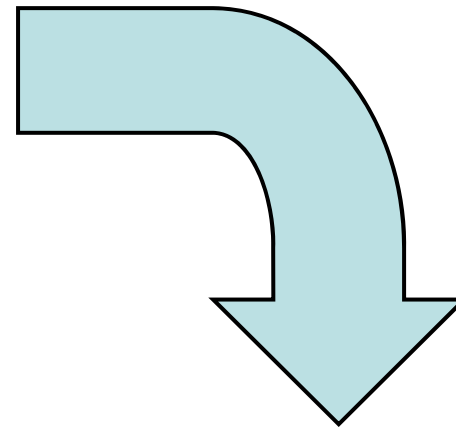
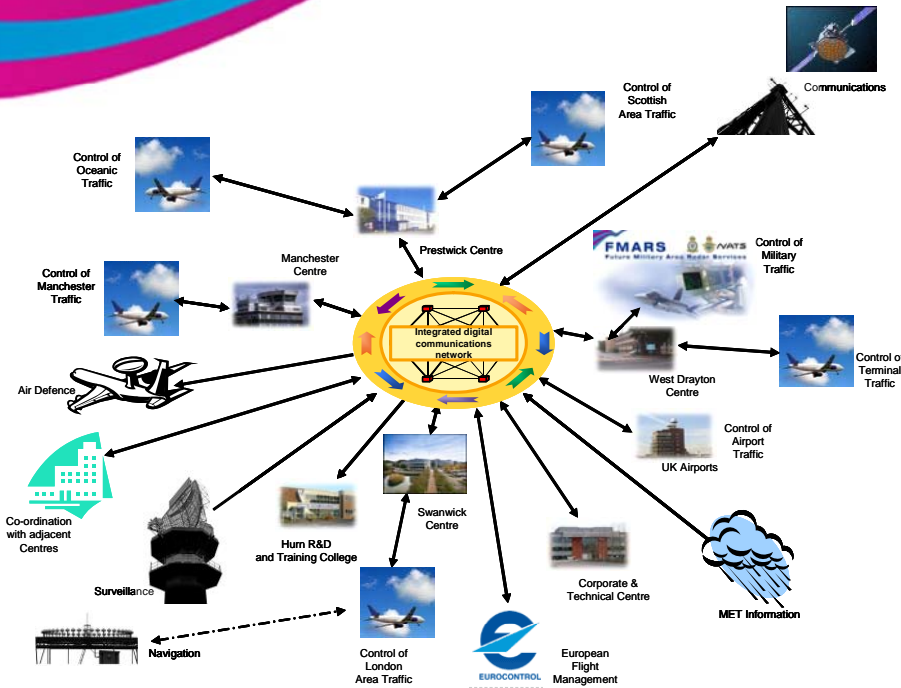
- OV-1, OV-5.
- SV-3, SV-5.
- StV-3.
- StV-5.

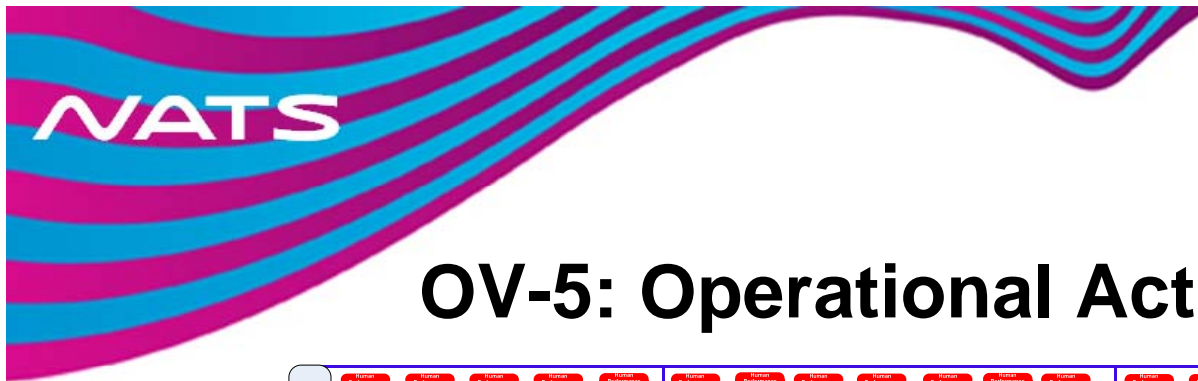


Non MODAF and evolved MODAF views.

- Product list/cost estimates.
- Development/Deployment matrices.
- High-level Architecture Evolution.

OV-1a: Ops Concept Graphic





OV-5: Operational Activity Model



Key:

Functional Dependencies

Text and box border colour indicates priority:

Level 1 – Red – highest
Level 2 – Purple
Level 3 – Blue – lowest

Change since last issue if present

1
2
3
32

Human
Performance

Value

Capacity

Has a beneficial impact on
Human Performance

Has a beneficial impact on Costs

Green if has a beneficial impact
on Environmental Performance

Has a beneficial impact on
Capacity

SV-5: Func. to Ops Activity Matrix

SV-3: Resource Interaction Matrix



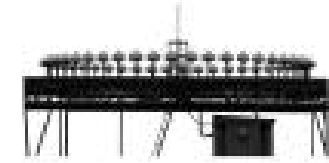
		System Component	FDP	SDP	SNET	Tact HMI
		Number of Products (inc dupls) = 44				
Facility	OpF#	Operational Function				
TC	1	Operational Function 1			NODE	NODE
TC	3	Operational Function 2		NODE		NODE
TC	6	Operational Function 3		NODE		
TC	2	Operational Function 4	NAS CCDS?	NODE	NODE	NODE
TC	4	Operational Function 5			NODE	NODE
TC	5	Operational Function 6				
TC	10	Operational Function 7	NAS			COTS
TC	34	Operational Function 7		NODE	NODE	NODE
TC	33	Operational Function 8				
TC	36	Operational Function 9	EFD			
AC	1	Operational Function 1		NODE	NERC	NERC
AC	2	Operational Function 2	NAS SFS CCDS?	NODE	NERC	NERC
AC	7	Operational Function 3	NAS EDDUS			
PC	3	Operational Function 1		NODE		NODE
PC	1	Operational Function 2			NODE	NODE
PC	2	Operational Function 6	NAS CCDS?	NODE	NODE	NODE
PC	4	Operational Function 7			NODE	NODE
PC	6	Operational Function 8		NODE		
PC	10	Operational Function 9	NAS			COTS
PC	34	Operational Function 10		NODE	NODE	NODE
PC	33	Operational Function 11				
PC	35	Operational Function 12		NODE		
PC	6	Operational Function 13		NODE		
PC	36	Operational Function 15	EFD			



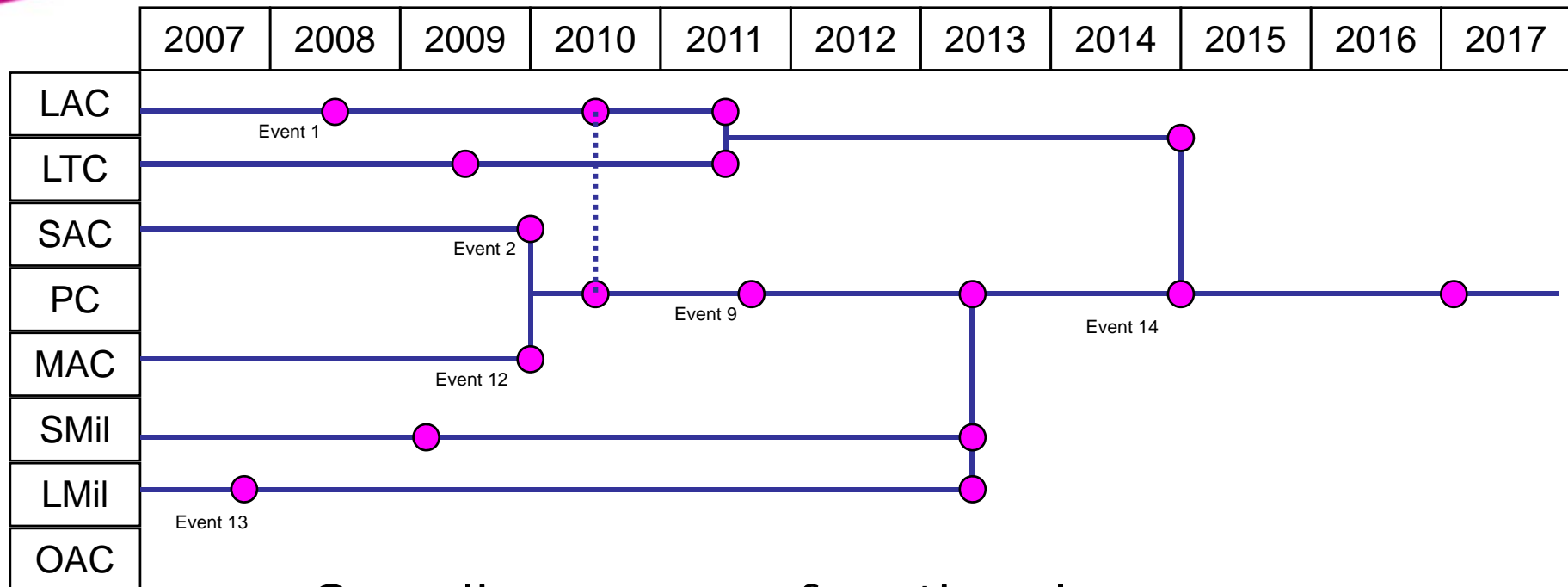
StV-3: Capability Phasing (Part 1)

[illegible]

- Look for gaps or duplicates over the phases.
- Traces to our SV-5, OV-5, phasing and delivery models.
- Time axis is by logical Epoch.



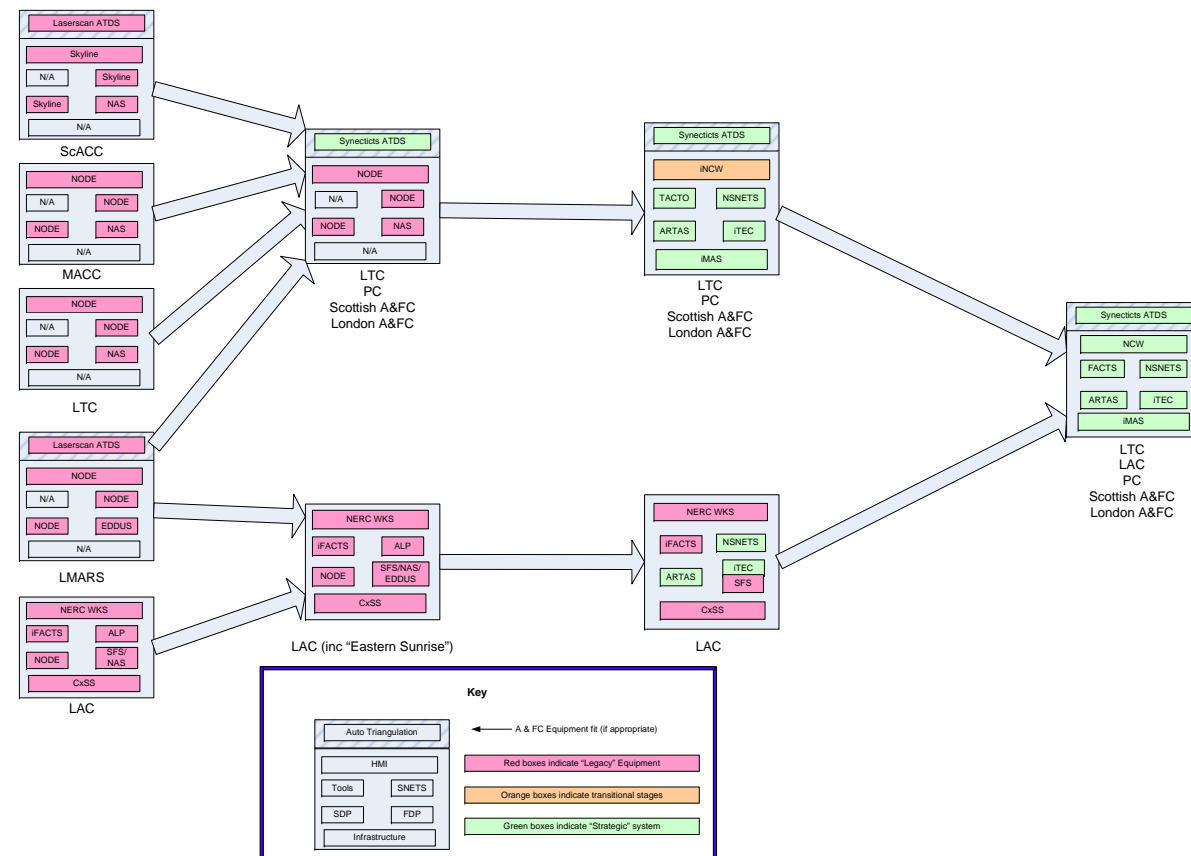
StV-3: Capability Phasing (Part 2)



- One diagram per functional area.
- When in time a particular capability per Service Unit will be available, adds the date axis.

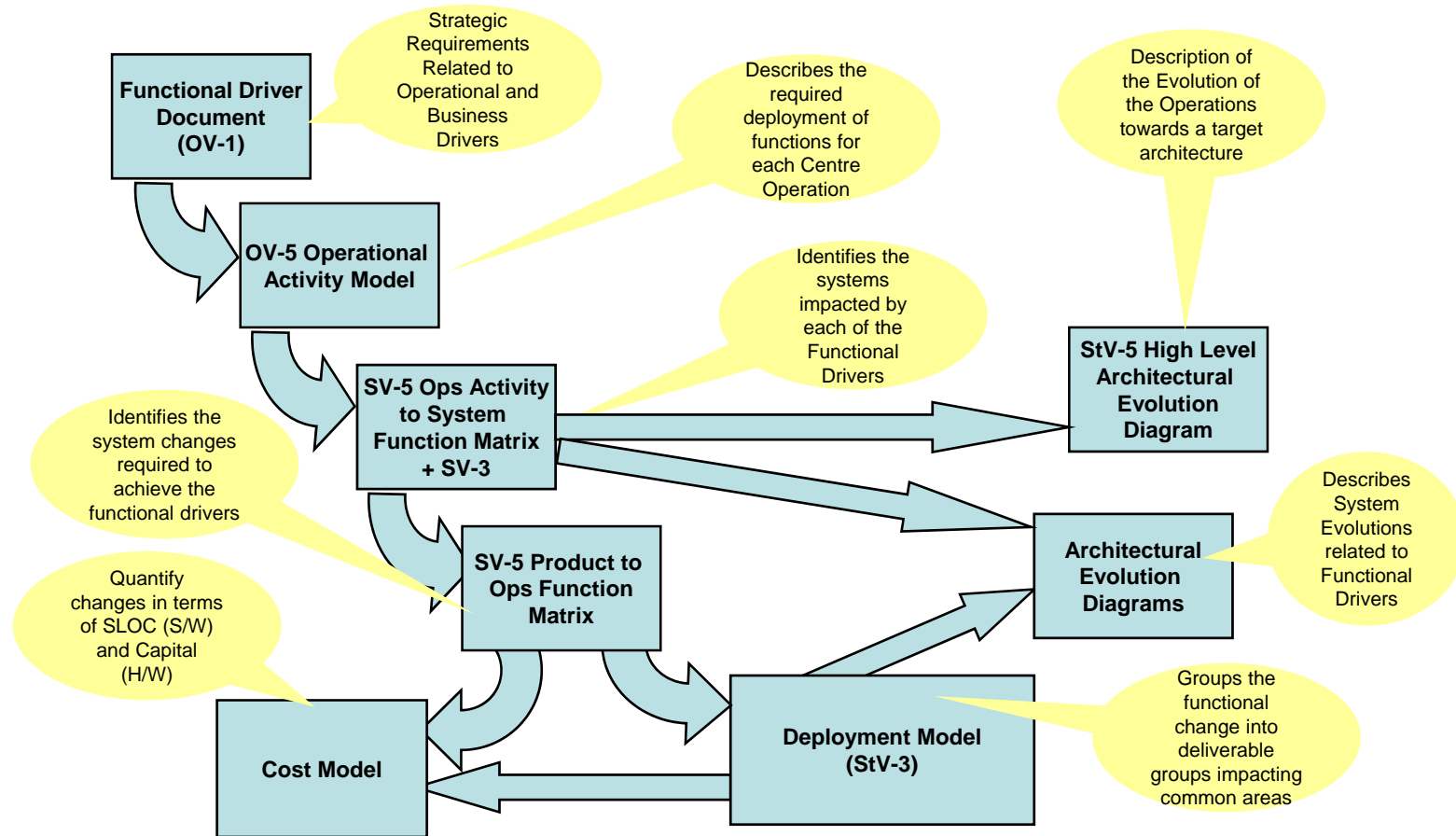


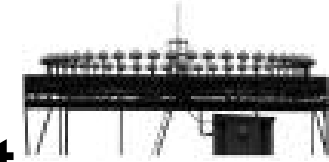
StV-5: Capability Deployment Mapping





How it all fits together





MODAF – Our Lessons Learnt



A good OV-5 and SV-5 are really key.

- clearly articulates the business objectives.
- map business objectives to complex legacy systems infrastructure.



The right implementation team.

- Backing from Executive, business buy-in.
- Access across the organisation, ensure there are no barriers.



Do not use MODAF slavishly.

- Do not use all the views immediately, look at most benefit.
- Capture supporting detail elsewhere.

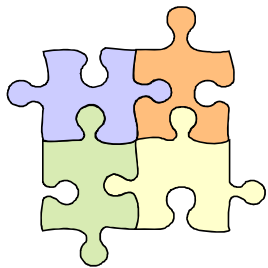


Well received by a broad audience.

- Output applicable & useful to many audiences.
- Key stakeholder buy-in through effective communication.

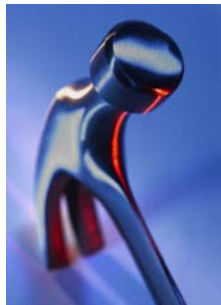


The Road to Tools



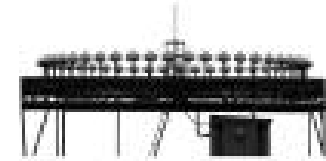
Avoid using tools too soon.

- Key stakeholders and contributors not comfortable using an “engineering” tool.
- We are now piloting a tool and working with the vendor to implement a structure that works for us.

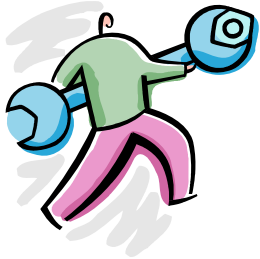


Be clear what you need tools to do for you

- Enhance visibility and configuration control.
- Cost-effective maintenance of the roadmap.
- Support assessment of change – agility.
- Maintain effective communication to all.
- Establish a good fit to your business needs.



Our Future Plans and Progress



Migration to Tools

- Conclude the pilot assessment.
- Configuration Control of roadmap artefacts.
- Review other MODAF views inc. Service views.



Embedding the Process.

- Extend the roadmap across all our technology areas.
- Maintain a clear definition of our Systems and their evolution over time.
- Re-alignment of the business to better deliver.
- Maintain ownership of the different views by key stakeholders across the business.



Communication

- Continue to communicate progress as we move forward.



Any
Questions?

